

(12) **UK Patent Application** (19) **GB** (11) **2 284 093** (13) **A**

(43) Date of Printing by UK Office 24.05.1995

(21) Application No 9501855.2

(22) Date of Filing 30.07.1993

(30) Priority Data

(31) 074989 (32) 30.07.1992 (33) CA

(86) International Application Data

PCT/CA93/00311 En 30.07.1993

(87) International Publication Data

WO94/03918 En 17.02.1994

(51) INT CL⁶

H01J 17/06, H01T 9/00

(52) UK CL (Edition N)

H1D DGX D11X D11Y D12B4 D12B47Y D12B6 D12C
D12E D12F D12G D17D D38 D8N D8TX D8TY D8X
D9CX D9CY D9C2 D9D D9FX D9FY D9Y

H3P PAJX

H3T T5VX T5V1 T5V3

U1S S1664 S1909 S1929 S2154

(56) Documents Cited by ISA

US 5126638 A US 4896076 A

(58) Field of Search by ISA

INT CL⁵ H01J, H01T

(71) Applicant(s)

Paulo N Correa
42 Rockview Gardens, Concord, Ontario L4K 2J6,
Canada

Alexandra N Correa

42 Rockview Gardens, Concord, Ontario L4K 2J6,
Canada

(74) Agent and/or Address for Service

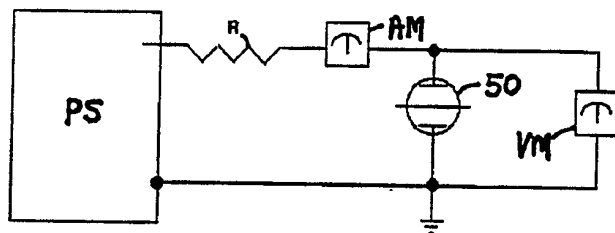
J Y & G W Johnson
Furnival House, 14-18 High Holborn, LONDON,
WC1V 6DE, United Kingdom

(72) Inventor(s)

Paulo N Correa
Alexandra N Correa

(54) Pulse generator

(57) A cold cathode vacuum discharge tube (50) is used in a circuit for generating pulsed auto-electronic emissions which are particularly intense and frequent in the abnormal glow discharge region. The discharge tube is characterized by a large electrode area at least of the cathode, and a large interelectrode gap. The electrodes preferably have a surface area of 16 cm² or more and they are preferably spaced at least 3 cm apart in a parallel relationship on each side of an excitor probe which is centered between them. In another configuration the probe forms the anode and the plates are cathodes. The circuit is driven from a direct current source of impedance sufficient to prevent establishment of a vacuum arc discharge.



GB 2 284 093 A